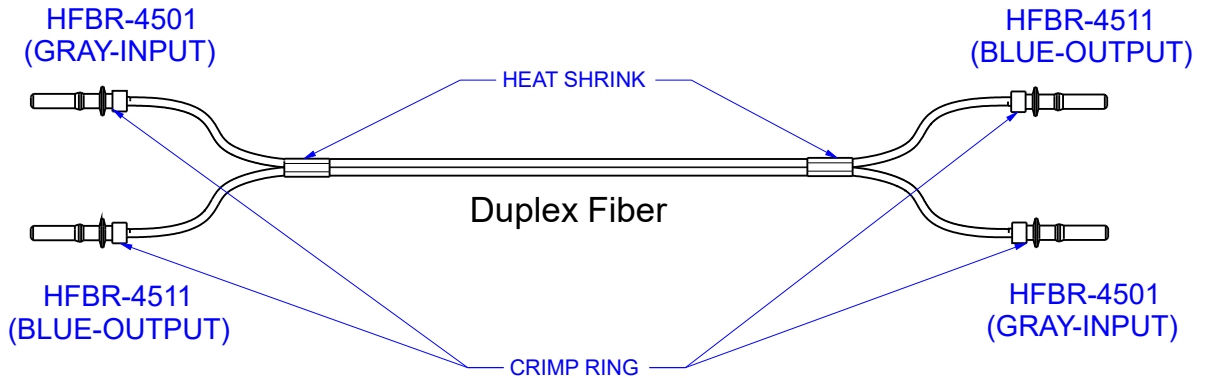
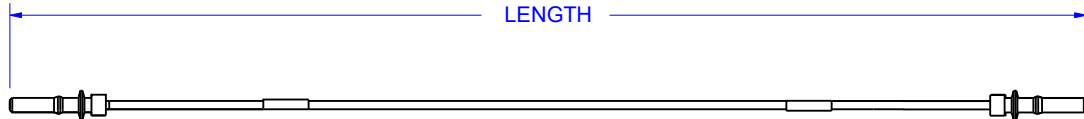


© COPYRIGHT 2022 BY INDUSTRIAL FIBER OPTICS, INC.
ALL RIGHTS RESERVED.

REVISIONS

REV	DESCRIPTION	ECO	DATE	DWN	APVD
A	Initial Release		6/28/2019	DDH	
B	Added note regarding material substitution	00417	8/15/2022	BB	DDH

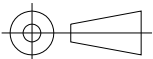
LENGTH	TOLERANCE
0.1m	+0.03;-0.0m
0.2-0.99m	± 0.03m
1-5.49m	± 0.05m
5.5-12.99m	± 0.1m
13-29.99m	± 0.15m
30-50m	± 0.3m
50.1 - 80	± 0.5m



*The fiber cable used for the assembly will be based upon the category of cable used for the SERIES. Asahi Kasei and Mitsubishi Eska optical fiber cable are shown, however other manufacturers' cable may be used based on availability.

SERIES	FIBER*
IF 1N3L	TC-1000W GH4002
IF 1N3M	TCV-1000W GHV4002
IF 1N3N	TCF-1000W GHCP4002
IF 1N3Q	GHTT4002
IF 1N3D	DC-1000W SH4002

UNLESS OTHERWISE SPECIFIED DIMENSIONS MILLIMETERS [IN.]	PRODUCT	Industrial Fiber Optics TEMPE, AZ 85281			
	MATERIAL				
DIMENSIONS ARE FOR REFERENCE ONLY NO TOLERANCES MAY BE IMPLIED FROM THIS DOCUMENT	FINISH	NONE	NAME Simplex Non-Latching Versatile Link Duplex Fiber Cable Assembly		
	DRAWN BY	David Hanson	SIZE A	SCALE 1:2	DOCUMENT NUMBER IF 1N3x
	DATE	6/28/2019	REV B		
	CHECKED BY	B. Bidwell	DO NOT SCALE DRAWING		
	DATE	8/15/2022	1 OF 1		



METRIC