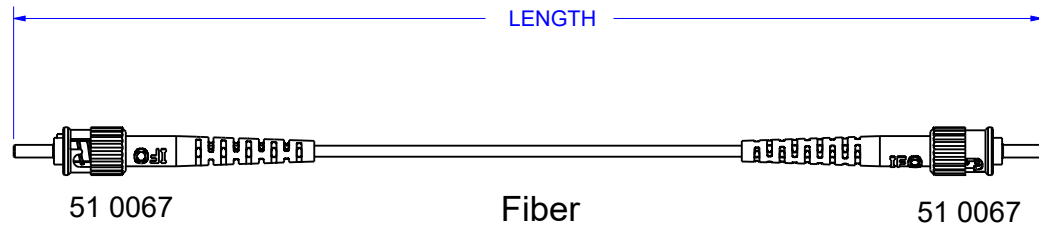


© COPYRIGHT 2022 BY INDUSTRIAL FIBER OPTICS, INC.
ALL RIGHTS RESERVED.

LENGTH	TOLERANCE
0.1m	+0.03;-0.0m
0.2-0.99m	± 0.03m
1-5.49m	± 0.05m
5.5-12.99m	± 0.1m
13-29.99m	± 0.15m
30-50m	± 0.3m
50.1 - 80	± 0.5m

REVISIONS					
REV	DESCRIPTION	ECO	DATE	DWN	APVD
A	Initial Release	00354	09/24/2019	DDH	
B	Replaced TCU-1000(L) with TCU-1000	00381	09/28/20	DDH	BB
C	Added note regarding material substitution, removed IF 3218	00417	8/15/2022	BB	DDH



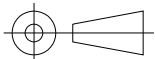
Variations to Standard Assembly

SERIES	FIBER
IF 121N	TCF-1000 GHCP4001
IF 121L	TC-1000 GH4001
IF 121O	GHN4001
IF 121V	BH4001 SHCN-1000(E)
IF 121D	DC-1000 SH4001
IF 121Y	LH4001-N
IF 121W	GHSL4001-OR

SERIES	FIBER*	CONNECTOR	BOOT
IF 121M	TCV-1000 GHV4001	51 0122 - Non-Magnetic ST	51 0018
IF 121Q	GHTT4001	51 0123	Heat Shrink

*The fiber cable used for the assembly will be based upon the category of cable used for the SERIES. Asahi Kasei and Mitsubishi Eska optical fiber cable are shown, however other manufacturers' cable may be used based on availability.

UNLESS OTHERWISE SPECIFIED DIMENSIONS MILLIMETERS [IN.]	PRODUCT	Industrial Fiber Optics TEMPE, AZ 85281			
	MATERIAL				
DIMENSIONS ARE FOR REFERENCE ONLY NO TOLERANCES MAY BE IMPLIED FROM THIS DOCUMENT	FINISH	NONE	NAME		
	DRAWN BY	David Hanson	ST POF Simplex Assembly		
	DATE	9/24/2019	SIZE	SCALE	DOCUMENT NUMBER
	CHECKED BY	B. Bidwell	A	1:1	IF 121x
	DATE	9/28/2020	DO NOT SCALE DRAWING		REV C
				1 OF 1	



METRIC